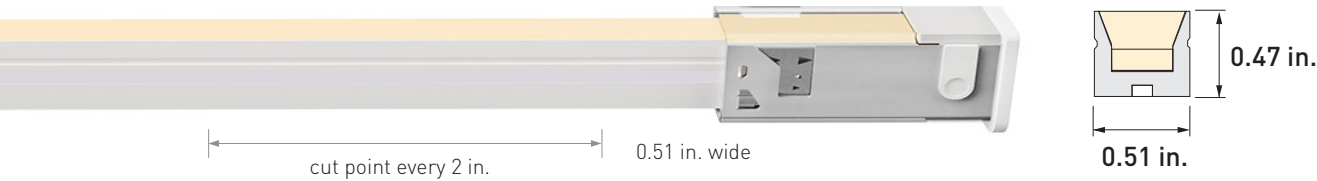


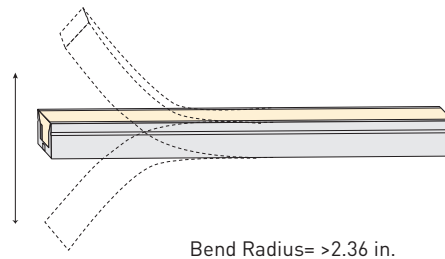
PrimaLine® Neon 200 TB (Top-Bending)



PrimaLine 24V Neon tape light is the next generation of neon lighting made from silicone for increased flexibility. It can be used indoors and outdoors for dynamic, curved lighting installations. A rugged, ultra-flexible silicone housing provides protection, longevity, and 100% hotspot-free lighting.

- Medium output
- Applications that need higher-intensity lighting
- Industry-leading 95+ CRI (Color Rendering Index)
- High R9 and R13 values for superb rendering of warm tones
- 5-year warranty

PrimaLine Neon 200 SB shines from the top and bends upward and downward.



Bend Radius= >2.36 in.

Stocked CCTs (Kelvin Temp.)	2600K, 3000K, 4100K, Red, Blue
Power Consumption per ft.	3 Watts
Input Voltage	24V DC
Tape Height	0.47 inches
Tape Width	0.51 inches
Beam Angle	120°
Bend Radius	>2.36 inches
Field Cuttable (UL 2108)	Every 2 inches
Max Run Length	32 ft.

Dimmable	Yes
Ambient Temp.	-4° F to 113° F
Spool Lengths	16.4 ft., 32 ft.
Location	Dry, Wet (IP67)
Certifications	UL Listed, UL 2108, CE, RoHS
Warranty	5 Year Limited

*Each tape light section comes with 18 in. right-hand lead wire.

16.4 ft. Spool	32 ft. Spool	Kelvin Temp. (CCT)	CRI	R9	R13	TM30	Lumens / Foot
AL-01-72-2405-TB	AL-01-72-2425-TB	2600K	98	88	99	94	159
AL-01-72-2402-TB	AL-01-72-2422-TB	3000K	98	92	99	94	164
AL-01-72-2406-TB	AL-01-72-2426-TB	4100K	97	99	98	93	177
n/a	AL-01-72-2431-TB	Red	n/a	n/a	n/a	n/a	n/a
n/a	AL-01-72-2432-TB	Blue	n/a	n/a	n/a	n/a	n/a

→ **Compatible Connectors** *Connectors and end cap have a IP65 rating

36 in. Splice Connectors (Add -10 to the end of the connector item # to make a 10 pack.)



Bottom Connector
AL-01-72-9907-BS



Straight Connector
AL-01-72-9907-DS



Right Connector
AL-01-72-9907-RS



Left Connector
AL-01-72-9907-LS

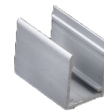
→ **Other Accessories**



End Cap Assembly
AL-01-72-9951 (1 pack)
AL-01-72-9956 (10 pack)



Silicone Caps
AL-01-72-9961 (1 pack)
AL-01-72-9966 (10 pack)



Aluminum Mounting Clip / Screws
AL-01-72-9981 (1 pack)
AL-01-72-9986 (10 pack)



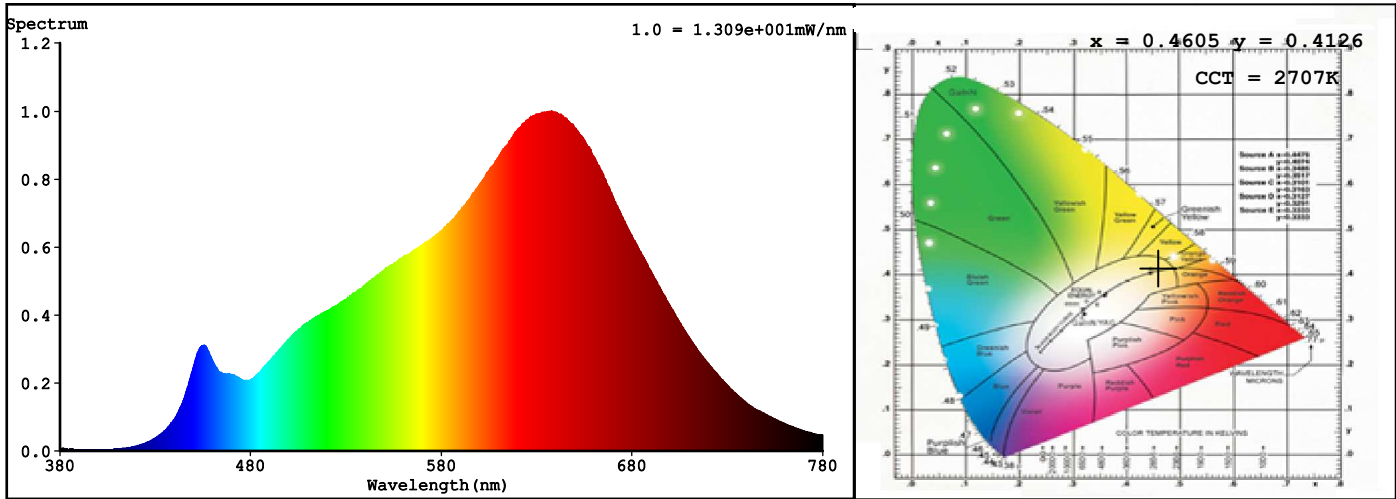
Flexible Mounting Track
AL-01-72-9930 (20 in.)



Aluminum Mounting Track
AL-01-72-9923-AL (40 in.)

2600K

Spectrum



Colorimetric Parameters

Chromaticity Coordinate: $x = 0.4605$ $y = 0.4126$ / $u' = 0.2620$ $v' = 0.5282$ ($duv=6.98e-04$)

CCT= 2707K Prcp WL: $L_d=583.9nm$ Purity=62.1%

Peak WL: $L_p=638nm$ FWHM: =149.7nm Ratio:R=27.1% G=70.1% B=2.8%

Render Index: $R_a = 97.9$ TM30:Rf=94 Rg=99

R1 =99 R2 =99 R3 =99 R4 =99 R5 =99 R6 =97 R7 =97

R8 =95 R9 =88 R10=99 R11=97 R12=89 R13=99 R14=99 R15=97

LEVEL:OUT WHITE:ANSI_2700K

Photometric & Radiometric Parameters

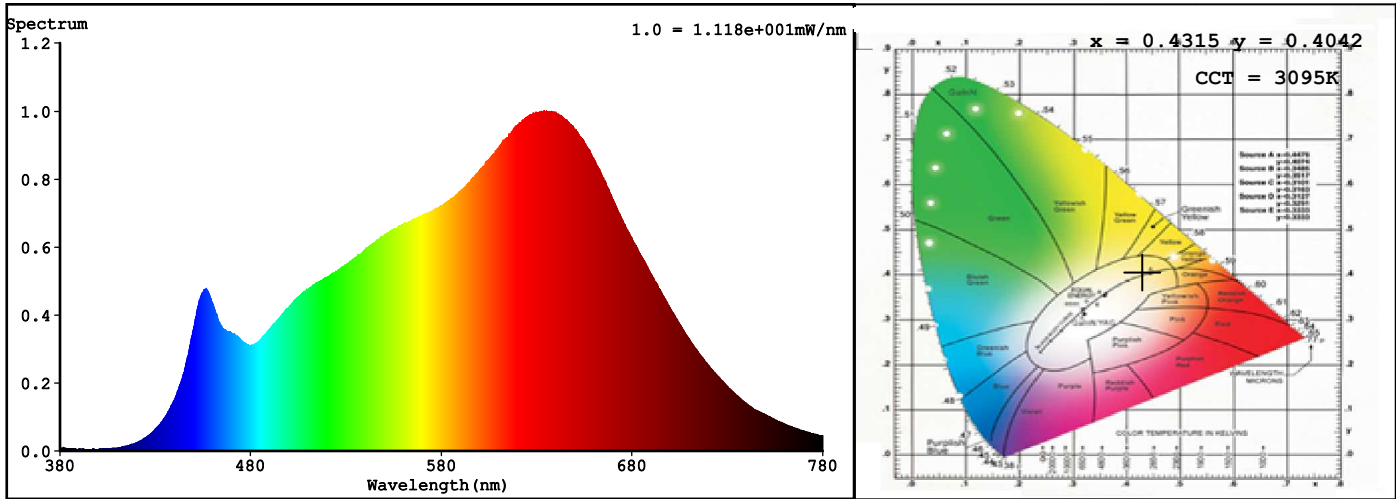
Flux = 558.90 lm Eff. : 53.16 lm/W Fe = 2.1472 W

Electrical parameters

V = 24.00 V I = 0.4381 A P = 10.51 W PF = 1.000 F=0.00 Hz

3000K

Spectrum



Colorimetric Parameters

Chromaticity Coordinate: $x = 0.4315$ $y = 0.4042$ / $u' = 0.2470$ $v' = 0.5206$ ($duv=8.21e-04$)

CCT= 3095K Prcp WL: $L_d=582.1nm$ Purity=50.8%

Peak WL: $L_p=634nm$ FWHM: =174.8nm Ratio:R=24.4% G=72.2% B=3.5%

Render Index: $R_a = 97.9$ TM30:Rf=94 Rg=99

R1 =99 R2 =99 R3 =99 R4 =98 R5 =98 R6 =98 R7 =96

R8 =96 R9 =92 R10=99 R11=99 R12=85 R13=99 R14=99 R15=98

LEVEL:OUT WHITE:ANSI_3000K

Photometric & Radiometric Parameters

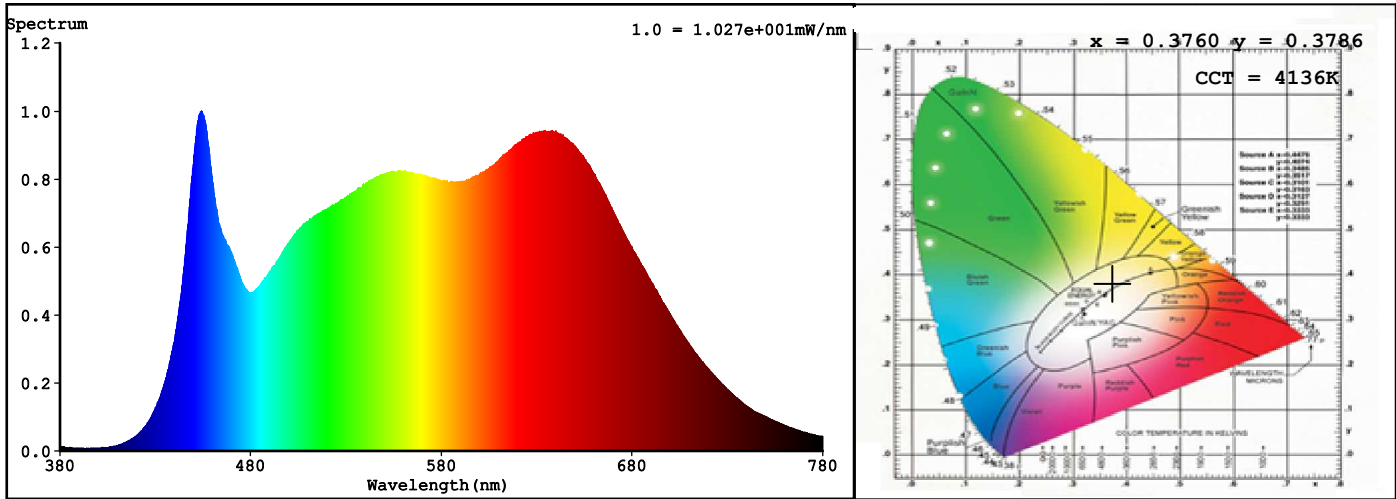
Flux = 540.16 lm Eff. : 54.76 lm/W $F_e = 2.0146 W$

Electrical parameters

V = 24.00 V I = 0.4110 A P = 9.863 W PF = 1.000 F=0.00 Hz

4100K

Spectrum



Colorimetric Parameters

Chromaticity Coordinate: $x = 0.3760$ $y = 0.3786$ / $u' = 0.2215$ $v' = 0.5017$ ($duv=2.18e-03$)

CCT= 4136K Prcp WL: $L_d=577.3nm$ Purity=26.4%

Peak WL: $L_p=454nm$ FWHM: $\approx 31.0nm$ Ratio:R=19.8% G=75.5% B=4.8%

Render Index: $R_a = 97.2$ TM30:Rf=93 Rg=99

R1 =99 R2 =99 R3 =97 R4 =96 R5 =96 R6 =96 R7 =97

R8 =97 R9 =99 R10=96 R11=97 R12=75 R13=98 R14=98 R15=96

LEVEL:OUT WHITE:ANSI_4000K

Photometric & Radiometric Parameters

Flux = 584.36 lm Eff. : 58.92 lm/W $F_e = 2.1399 W$

Electrical parameters

V = 24.00 V I = 0.4133 A P = 9.918 W PF = 1.000 F=0.00 Hz